

Lower Thames Crossing

6.2 Environmental Statement Figures

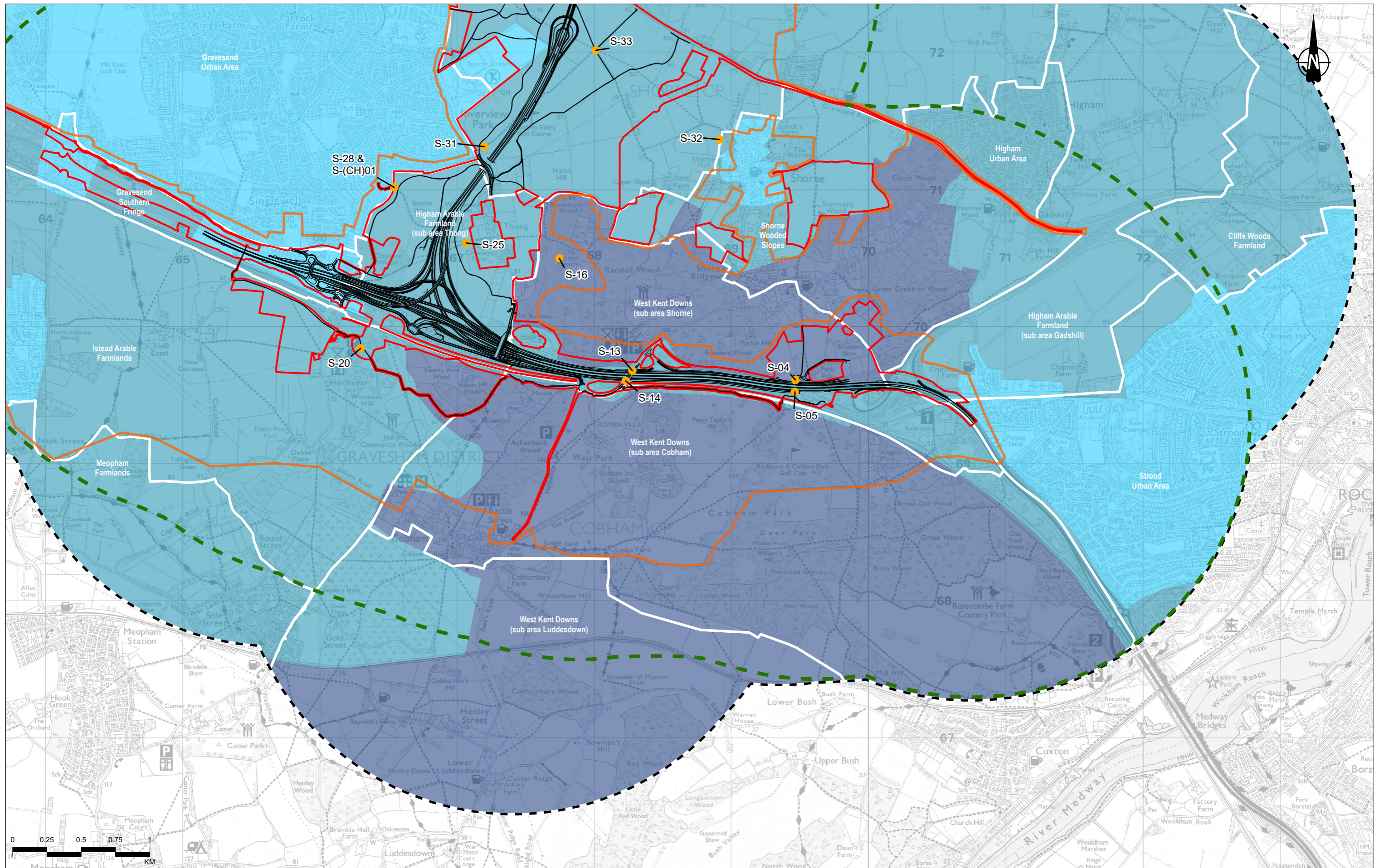
Figure 7.3 - Environmental Lighting Zones

APFP Regulation 5(2)(a)
Infrastructure Planning
(Applications: Prescribed Forms and Procedure)
Regulations 2009
Volume 6

DATE: October 2022

Planning Inspectorate Scheme Ref: TR010032
Application Document Ref: TR010032/APP/6.2

VERSION: 1.0

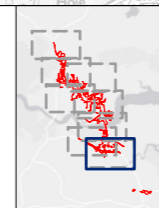


Contains Ordnance Survey data. © Crown copyright and database rights 2022. Ordnance Survey 100030649

P02	S8	26/10/2022	DCO Application	MPC	SK	BF
Rev	Status	Rev. Date	Purpose of revision	Drawn	Chkd	Apprvd

Legend	
	Route alignment
	Order Limits
	Study Area
	2km Offset from Lower Thames Crossing Route Alignment
	2km Area of Search (Offset from Order Limits Boundary)
	(E1) Areas of Intrinsic Dark Landscapes - National Parks or Other Rural Landscapes with Strict Limits on Light Trespass
	(E2) Areas of Low District Brightness - Outer Suburban or Residential Areas
	(E3) Areas of Medium District Brightness - Urban Residential Areas
	(E4) Areas of High District Brightness - Urban Areas, Residential and Commercial with High Levels of Nighttime Activity

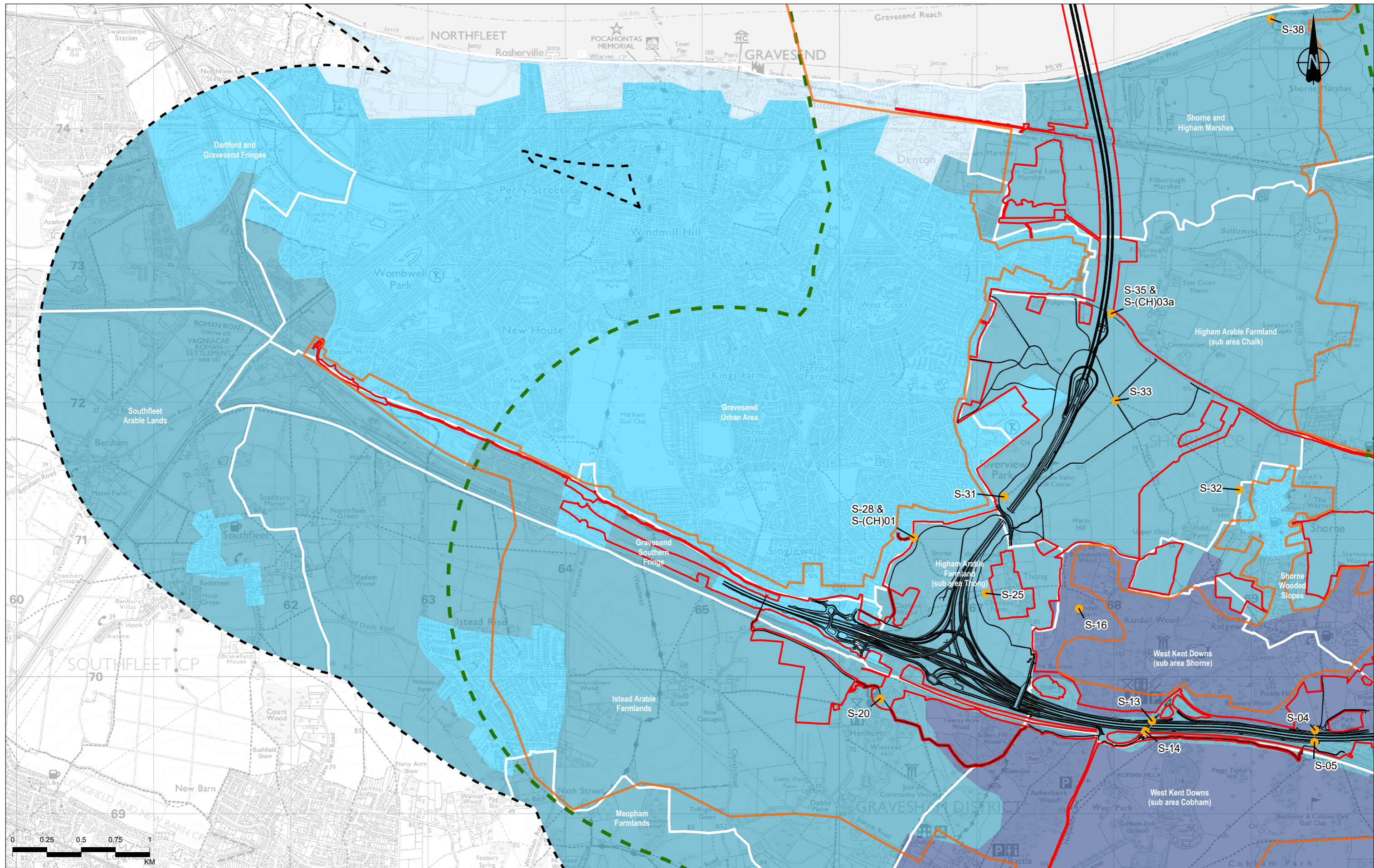
Viewpoint Location :	
	Night Time Viewpoint



Client: national highways

Project: LOWER THAMES CROSSING

Status	DCO APPLICATION	Original Size	A3	Revision	P02
Application Document Number	TR010032/APP/6.2	Scale	1:25,000		
Drawing Title	Figure 7.3 - Environmental Lighting Zones				
Page 1 of 8					
Drawing Number	HE540039-CJV-ELS-SZP_EGNE0000000-DR-LE-50022				

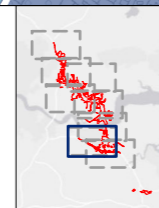


Contains Ordnance Survey data. © Crown copyright and database rights 2022. Ordnance Survey 100030649

P02	S8	26/10/2022	DCO Application	MPC	SK	BF
Rev	Status	Rev. Date	Purpose of revision	Drawn	Chkd	Apprvd

Legend	
	Route alignment
	Order Limits
	Study Area
	2km Offset from Lower Thames Crossing Route Alignment
	2km Area of Search (Offset from Order Limits Boundary)
	(E1) Areas of Intrinsically Dark Landscapes - National Parks or Other Rural Landscapes with Strict Limits on Light Trespass
	(E2) Areas of Low District Brightness - Outer Suburban or Residential Areas
	(E3) Areas of Medium District Brightness - Urban Residential Areas
	(E4) Areas of High District Brightness - Urban Areas, Residential and Commercial with High Levels of Nighttime Activity

Viewpoint Location :	
	Night Time Viewpoint

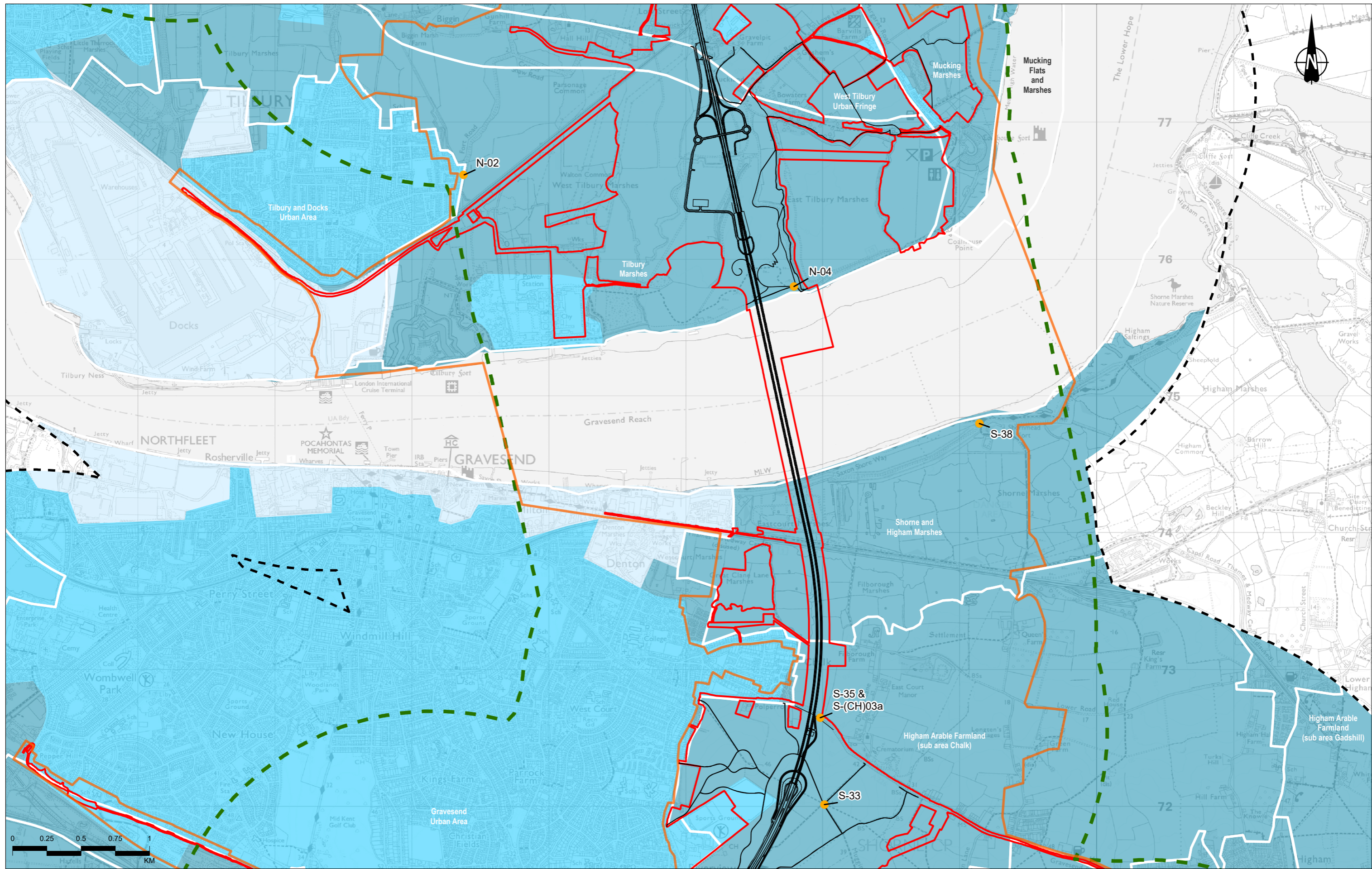


Client: **national highways**

Project: **LOWER THAMES CROSSING**

Status	DCO APPLICATION	Original Size	A3	Revision	P02
Application Document Number	TR010032/APP/6.2	Scale	1:25,000		
Drawing Title	Figure 7.3 - Environmental Lighting Zones				
Page 2 of 8					
Drawing Number	HE540039-CJV-ELS-SZP_EGNE00000000-DR-LE-50022				

Z:\Environment\Environmental Statement\07_Landscape\HE540039-CJV-ELS-SZP_EGNE00000000-DR-LE-50022 - 7_3_apr

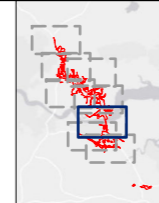


Contains Ordnance Survey data. © Crown copyright and database rights 2022. Ordnance Survey 100030649

P02	S8	26/10/2022	DCO Application	MPC	SK	BF
Rev	Status	Rev. Date	Purpose of revision	Drawn	Chkd	Apprvd

Legend	
	Route alignment
	Order Limits
	Study Area
	2km Offset from Lower Thames Crossing Route Alignment
	2km Area of Search (Offset from Order Limits Boundary)
	(E1) Areas of Intrinsically Dark Landscapes - National Parks or Other Rural Landscapes with Strict Limits on Light Trespass
	(E2) Areas of Low District Brightness - Outer Suburban or Residential Areas
	(E3) Areas of Medium District Brightness - Urban Residential Areas
	(E4) Areas of High District Brightness - Urban Areas, Residential and Commercial with High Levels of Nighttime Activity

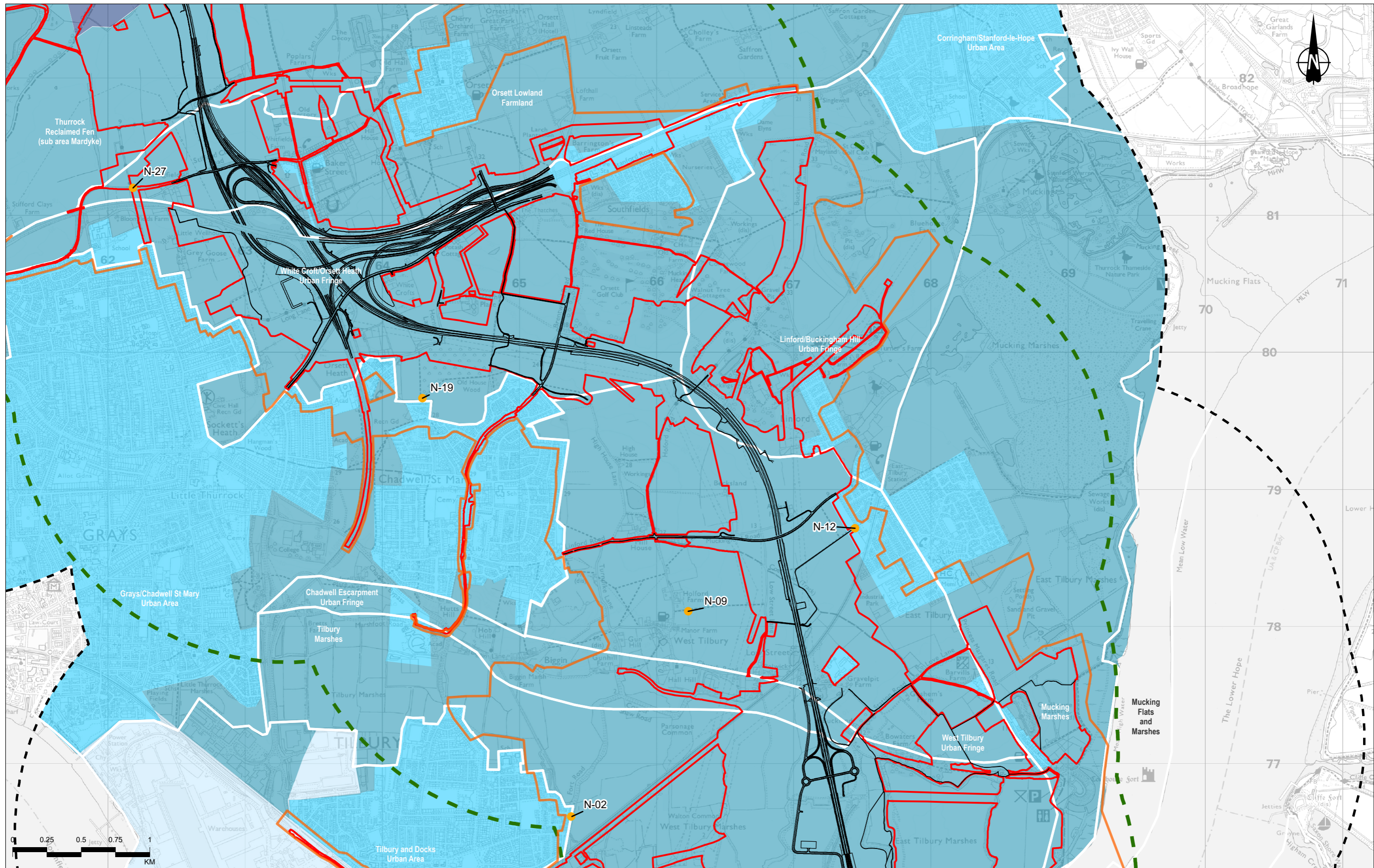
Viewpoint Location :	
	Night Time Viewpoint



Client
 national highways
 Project
LOWER THAMES CROSSING

Status	DCO APPLICATION	Original Size	A3	Revision	P02
Application Document Number	TR010032/APP/6.2	Scale	1:25,000		
Drawing Title	Figure 7.3 - Environmental Lighting Zones				
Page 3 of 8					
Drawing Number	HE540039-CJV-ELS-SZP_EGNE0000000-DR-LE-50022				

Z:\Environment\Environmental Statement\07_Landscapes\HE540039-CJV-ELS-SZP_EGNE0000000-DR-LE-50022 - 7_3_apr

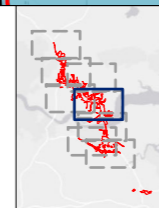


Contains Ordnance Survey data. © Crown copyright and database rights 2022. Ordnance Survey 100030649

Rev	Status	Rev. Date	Purpose of revision	Drawn	Chkd	Apprv'd
P02	S8	26/10/2022	DCO Application	MPC	SK	BF

Legend	
	Route alignment
	Order Limits
	Study Area
	2km Offset from Lower Thames Crossing Route Alignment
	2km Area of Search (Offset from Order Limits Boundary)
	(E1) Areas of Intrinsic Dark Landscapes - National Parks or Other Rural Landscapes with Strict Limits on Light Trespass
	(E2) Areas of Low District Brightness - Outer Suburban or Residential Areas
	(E3) Areas of Medium District Brightness - Urban Residential Areas
	(E4) Areas of High District Brightness - Urban Areas, Residential and Commercial with High Levels of Nighttime Activity

Viewpoint Location :	
	Night Time Viewpoint

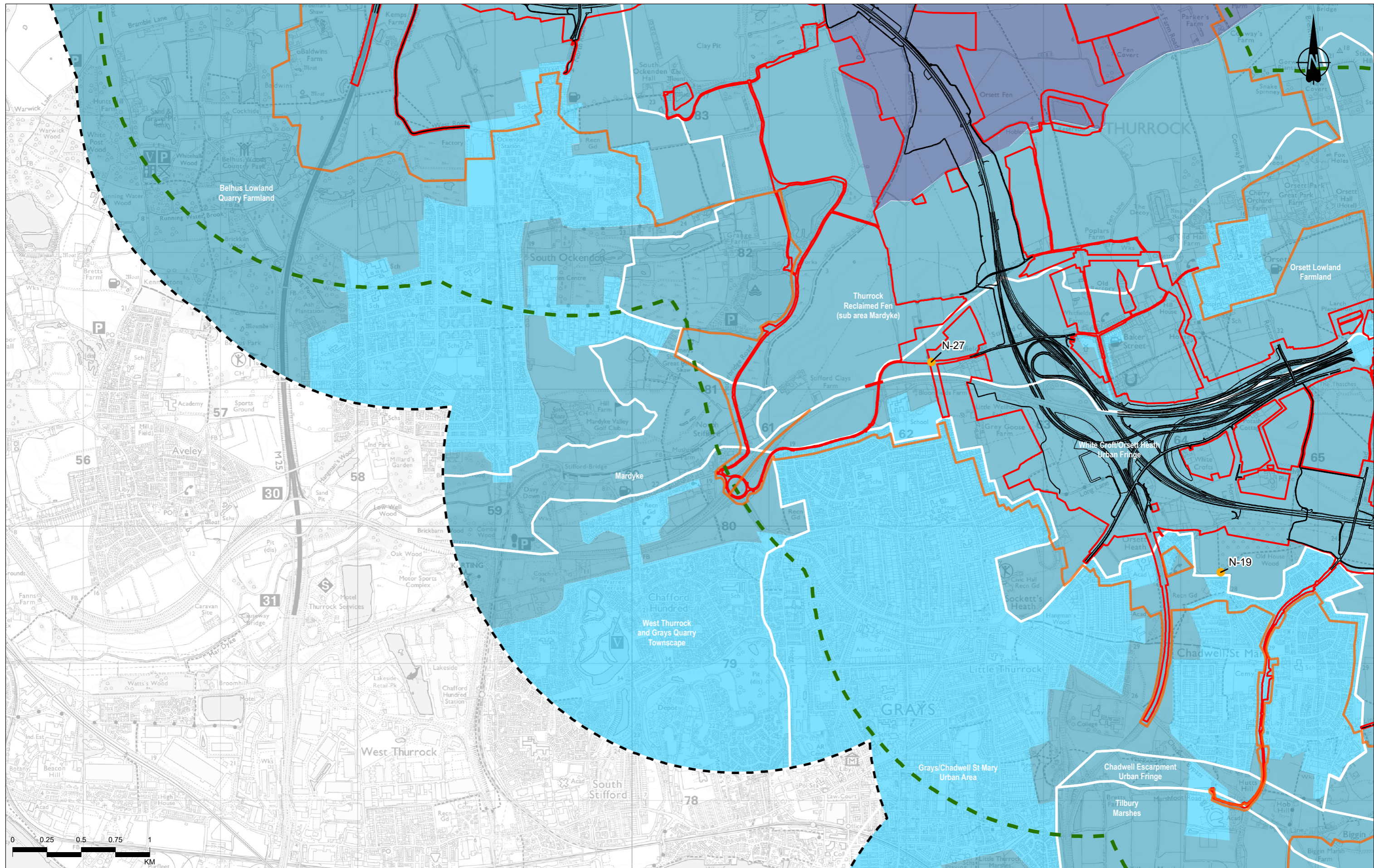


Client: national highways

Project: LOWER THAMES CROSSING

Status	DCO APPLICATION	Original Size	A3	Revision	P02
Application Document Number	TR010032/APP/6.2	Scale	1:25,000		
Drawing Title	Figure 7.3 - Environmental Lighting Zones				
Page 4 of 8					
Drawing Number	HE540039-CJV-ELS-SZP_EGNE00000000-DR-LE-50022				

Z:\Environment\Environmental Statement\07_Landscapes\HE540039-CJV-ELS-SZP_EGNE00000000-DR-LE-50022 - 7_3_apr



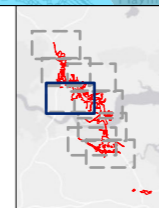
Contains Ordnance Survey data. © Crown copyright and database rights 2022. Ordnance Survey 100030649

Rev	Status	Rev. Date	Purpose of revision	Drawn	Chkd	Apprvd
P02	S8	26/10/2022	DCO Application	MPC	SK	BF

Legend

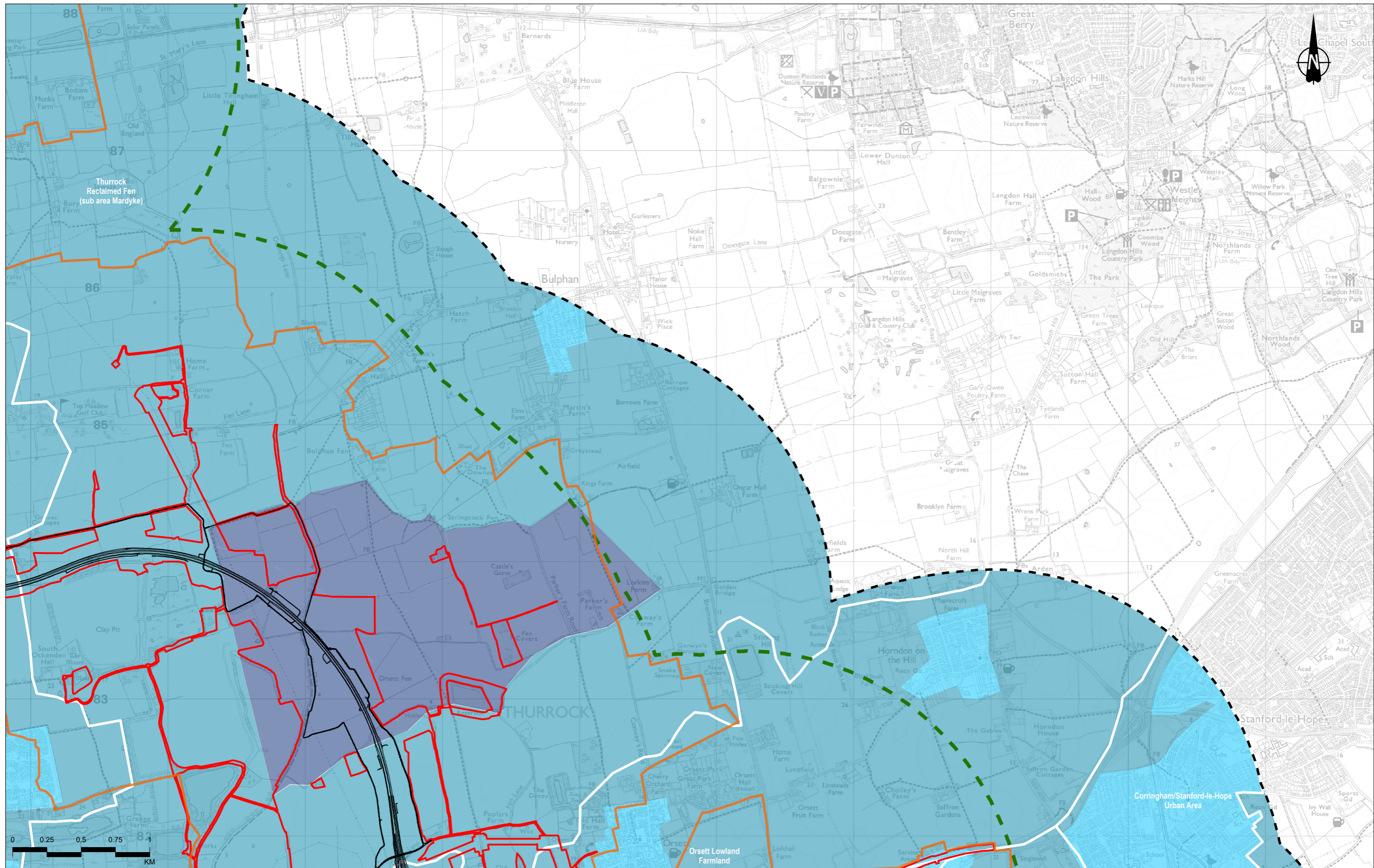
	Route alignment		(E1) Areas of Intrinsically Dark Landscapes - National Parks or Other Rural Landscapes with Strict Limits on Light Trespass
	Order Limits		(E2) Areas of Low District Brightness - Outer Suburban or Residential Areas
	Study Area		(E3) Areas of Medium District Brightness - Urban Residential Areas
	2km Offset from Lower Thames Crossing Route Alignment		(E4) Areas of High District Brightness - Urban Areas, Residential and Commercial with High Levels of Nighttime Activity
	2km Area of Search (Offset from Order Limits Boundary)		

Viewpoint Location :
 Night Time Viewpoint



Client
 national highways
 Project
LOWER THAMES CROSSING

Status	DCO APPLICATION	Original Size	A3	Revision	P02
Application Document Number	TR010032/APP/6.2	Scale	1:25,000		
Drawing Title	Figure 7.3 - Environmental Lighting Zones				
Page 5 of 8					
Drawing Number	HE540039-CJV-ELS-SZP_EGNE0000000-DR-LE-50022				

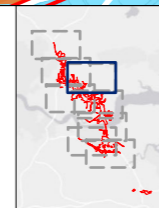


Contains Ordnance Survey data. © Crown copyright and database rights 2022. Ordnance Survey 100030649

P02	S8	26/10/2022	DCO Application	MPC	SK	BF
Rev	Status	Rev. Date	Purpose of revision	Drawn	Chkd	Apprvd

Legend	
	Route alignment
	Order Limits
	Study Area
	2km Offset from Lower Thames Crossing Route Alignment
	2km Area of Search (Offset from Order Limits Boundary)
	(E1) Areas of Intrinsically Dark Landscapes - National Parks or Other Rural Landscapes with Strict Limits on Light Trespass
	(E2) Areas of Low District Brightness - Outer Suburban or Residential Areas
	(E3) Areas of Medium District Brightness - Urban Residential Areas
	(E4) Areas of High District Brightness - Urban Areas, Residential and Commercial with High Levels of Nighttime Activity

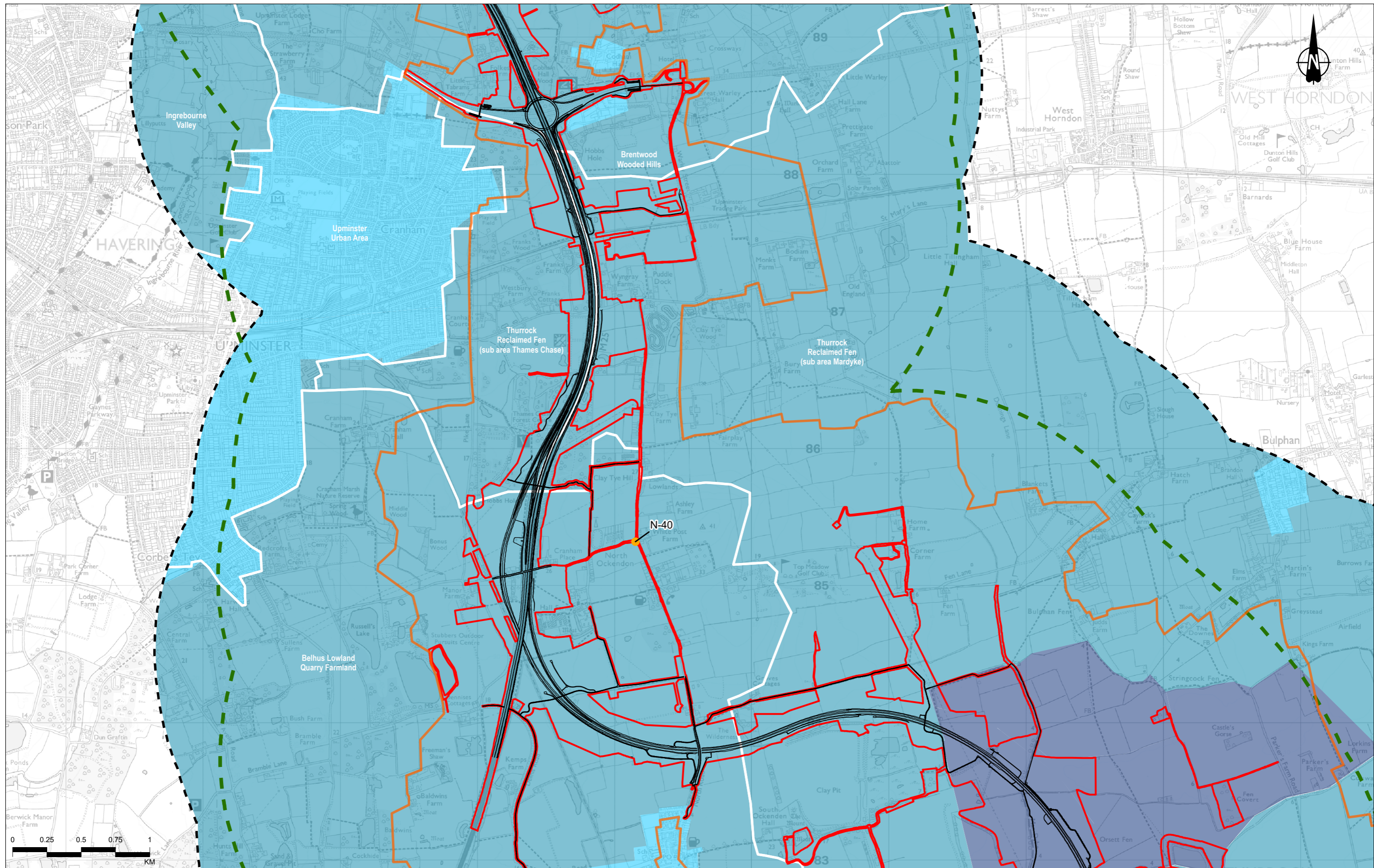
Viewpoint Location :
 Night Time Viewpoint



Client
 national highways
 Project
LOWER THAMES CROSSING

Status	DCO APPLICATION	Original Size	A3	Revision	P02
Application Document Number	TR010032/APP/6.2	Scale	1:25,000		
Drawing Title	Figure 7.3 - Environmental Lighting Zones				
Page 6 of 8					
Drawing Number	HE540039-CJV-ELS-SZP_EGNE0000000-DR-LE-50022				

Z:\Environment\Environmental Statement\07_Landscape\HE540039-CJV-ELS-SZP_EGNE0000000-DR-LE-50022 - 7_3_apr

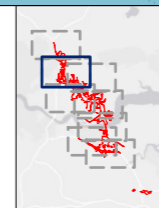


Contains Ordnance Survey data. © Crown copyright and database rights 2022. Ordnance Survey 100030649

P02	S8	26/10/2022	DCO Application	MPC	SK	BF
Rev	Status	Rev. Date	Purpose of revision	Drawn	Chkd	Apprvd

Legend	
	Route alignment
	Order Limits
	Study Area
	2km Offset from Lower Thames Crossing Route Alignment
	2km Area of Search (Offset from Order Limits Boundary)
	(E1) Areas of Intrinsically Dark Landscapes - National Parks or Other Rural Landscapes with Strict Limits on Light Trespass
	(E2) Areas of Low District Brightness - Outer Suburban or Residential Areas
	(E3) Areas of Medium District Brightness - Urban Residential Areas
	(E4) Areas of High District Brightness - Urban Areas, Residential and Commercial with High Levels of Nighttime Activity

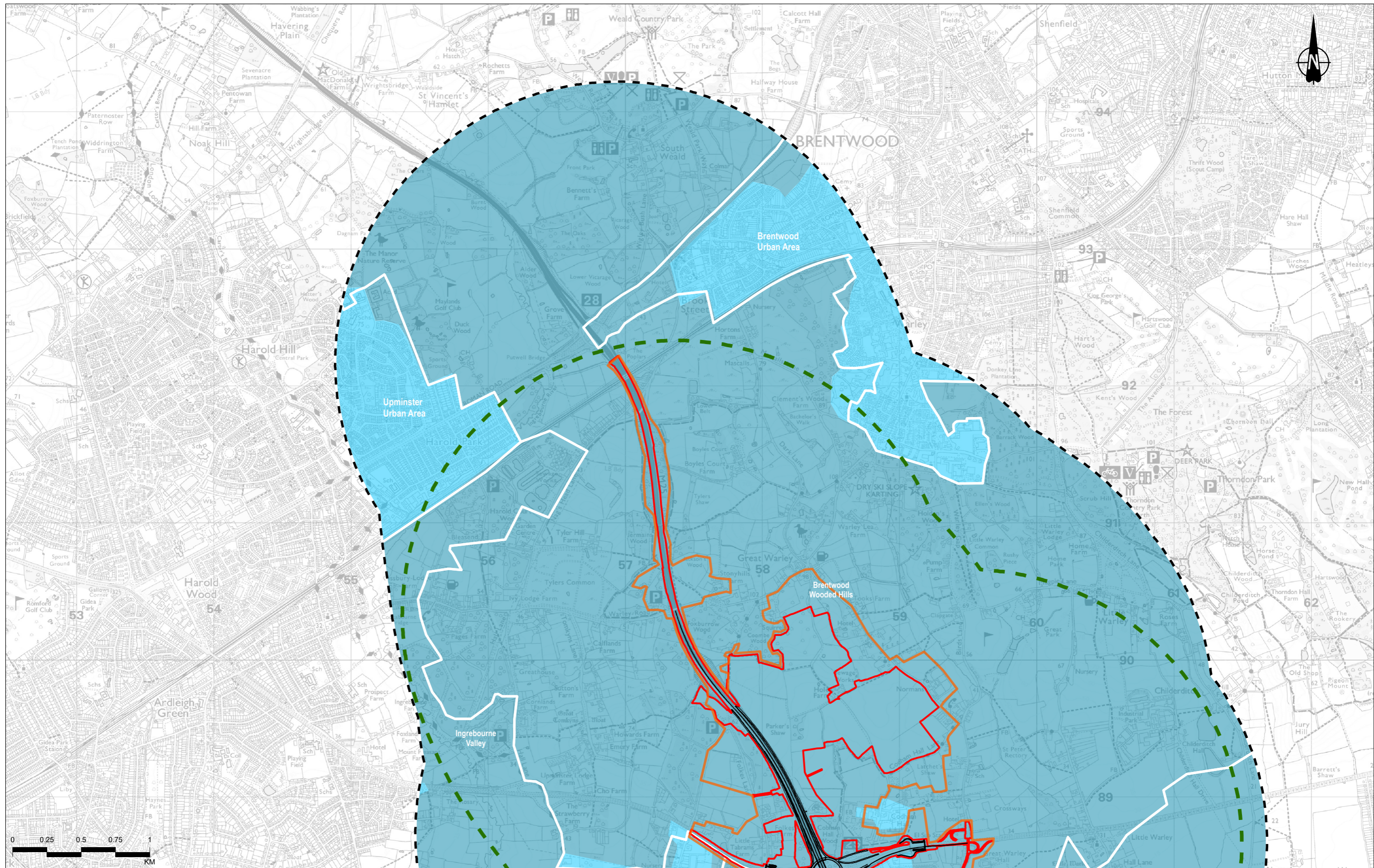
Viewpoint Location :
 Night Time Viewpoint



Client
 national highways
 Project
LOWER THAMES CROSSING

Status	DCO APPLICATION	Original Size	A3	Revision	P02
Application Document Number	TR010032/APP/6.2	Scale	1:25,000		
Drawing Title	Figure 7.3 - Environmental Lighting Zones				
Page 7 of 8					
Drawing Number	HE540039-CJV-ELS-SZP_EGNE00000000-DR-LE-50022				

Z:\Environment\Environmental Statement\07_Landscapes\HE540039-CJV-ELS-SZP_EGNE00000000-DR-LE-50022 - 7_3_apr

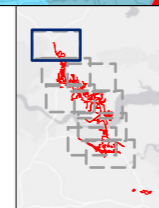


Contains Ordnance Survey data. © Crown copyright and database rights 2022. Ordnance Survey 100030649

P02	S8	26/10/2022	DCO Application	MPC	SK	BF
Rev	Status	Rev. Date	Purpose of revision	Drawn	Chkd	Apprvd

Legend	
	Route alignment
	Order Limits
	Study Area
	2km Offset from Lower Thames Crossing Route Alignment
	2km Area of Search (Offset from Order Limits Boundary)
	(E1) Areas of Intrinsically Dark Landscapes - National Parks or Other Rural Landscapes with Strict Limits on Light Trespass
	(E2) Areas of Low District Brightness - Outer Suburban or Residential Areas
	(E3) Areas of Medium District Brightness - Urban Residential Areas
	(E4) Areas of High District Brightness - Urban Areas, Residential and Commercial with High Levels of Nighttime Activity

Viewpoint Location :	
	Night Time Viewpoint



Client
 national highways
 Project
LOWER THAMES CROSSING

Status	DCO APPLICATION	Original Size	A3	Revision	P02
Application Document Number	TR010032/APP/6.2	Scale	1:25,000		
Drawing Title	Figure 7.3 - Environmental Lighting Zones				
Page 8 of 8					
Drawing Number	HE540039-CJV-ELS-SZP_EGNE0000000-DR-LE-50022				

Z:\Environment\Environmental Statement\07_Landscape\HE540039-CJV-ELS-SZP_EGNE0000000-DR-LE-50022 - 7_3_apr

If you need help accessing this or any other National Highways information, please call **0300 123 5000** and we will help you.

© Crown copyright 2022.

You may re-use this information (not including logos) free of charge in any format or medium, under the terms of the Open Government Licence. To view this licence:

visit www.nationalarchives.gov.uk/doc/open-government-licence/

write to the **Information Policy Team, The National Archives, Kew, London TW9 4DU**, or email psi@nationalarchives.gsi.gov.uk.

Mapping (where present): © Crown copyright and database rights 2022 OS 100030649. You are permitted to use this data solely to enable you to respond to, or interact with, the organisation that provided you with the data. You are not permitted to copy, sub-license, distribute or sell any of this data to third parties in any form.

If you have any enquiries about this publication email info@nationalhighways.co.uk or call **0300 123 5000***.

*Calls to 03 numbers cost no more than a national rate call to an 01 or 02 number and must count towards any inclusive minutes in the same way as 01 and 02 calls. These rules apply to calls from any type of line including mobile, BT, other fixed line or payphone. Calls may be recorded or monitored.

Printed on paper from well-managed forests and other controlled sources when issued directly by National Highways.

Registered office Bridge House, 1 Walnut Tree Close, Guildford GU1 4LZ

National Highways Company Limited registered in England and Wales number 09346363